

Function

The pump described in these operating instructions is a self-priming, externally pressurized vane pump. The direction of flow always remains the same even if the direction of rotation changes. The reversal is carried out without valves by means of a reverse ring.

Connection

The suction connection is marked with "S", the pipe connections should be mounted accordingly. The connections must be oil - and - air tight to guarantee a trouble-free operation. The complete plant should be flushed before the startup.

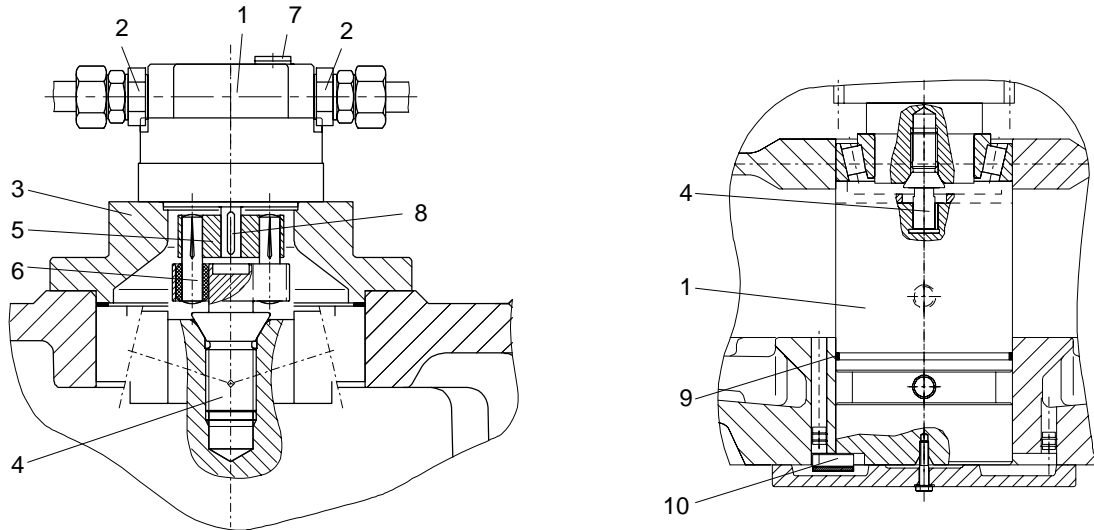
Mounting position

The pump can be mounted either horizontally or vertically. If installed vertically (pump arranged uppermost), the pump must be primed before the first startup. For this purpose, remove the filler plug. After filling the oil, the filler plug must be installed air-tight. See instruction plate for the required oil quantity.

Maintenance

These pumps are maintenance-free as they are lubricated by the delivered medium (oil). After a standstill of 6 months, these pumps must be primed again before the first startup.

Example of pump attachment



- | | | | |
|---|-----------------|----|--------------------------------|
| 1 | Pump KSW | 6 | Driver |
| 2 | GE-screwing | 7 | Filler plug for first startup |
| 3 | Cover | 8 | Keyway according to DIN 6885/1 |
| 4 | Coupling part 1 | 9 | O-ring |
| 5 | Coupling part 2 | 10 | Locking device |

Technical data

- Operating speed = 1500 1/min
- min. speed = 300 1/min at max. suction height of 750 mm
- Speed = 3000 1/min (briefly)
- max. suction height = 2000 mm
- Operating pressure = 3 bar
- max. pressure = 10 bar (briefly)
- max. medium temperature = 100 °C
- Mounting position = horizontal/vertical (bottom or top)
- max. medium viscosity = 5000 cSt
- Materials = housing GG-25
sealing rings Viton